

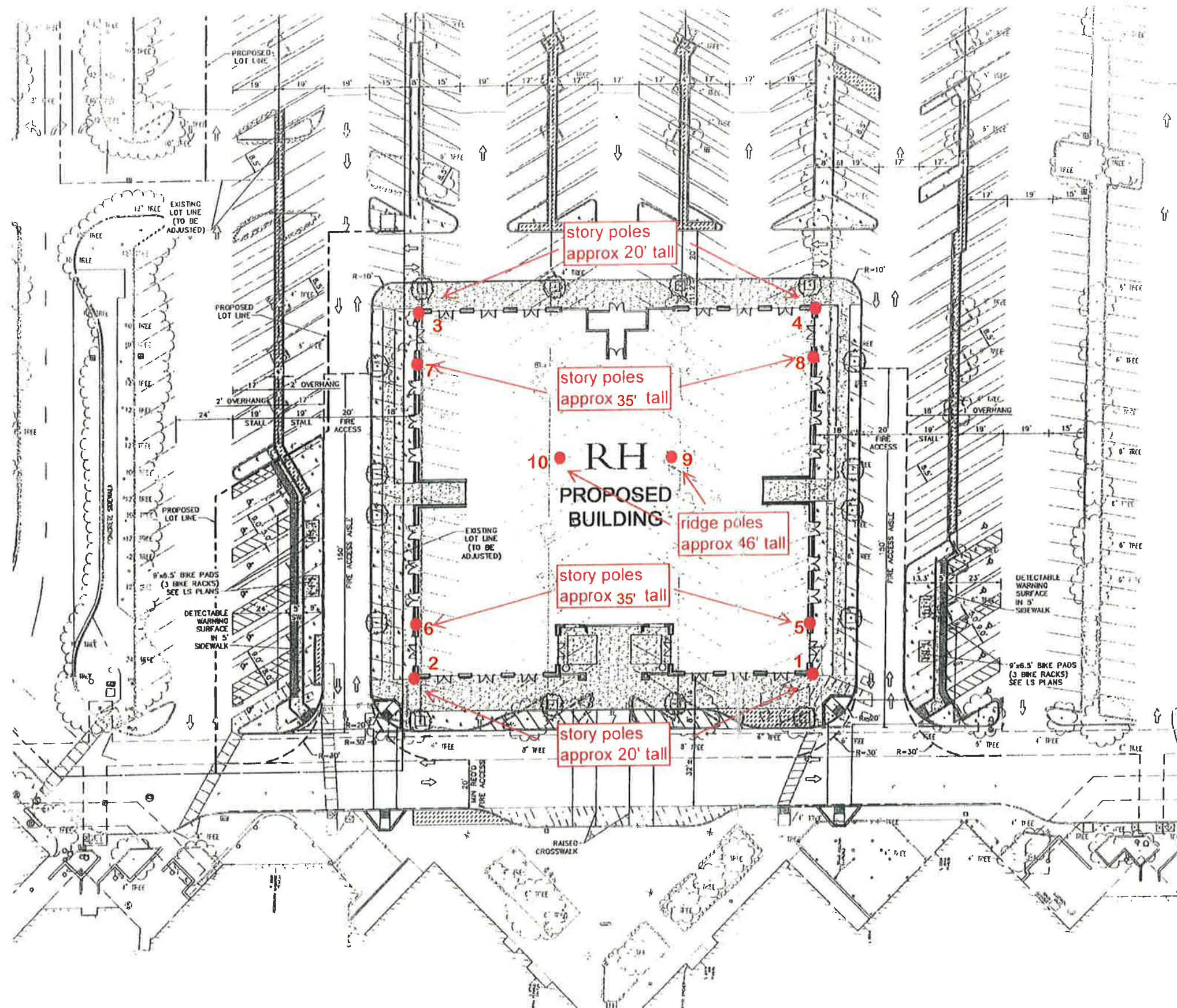
# RH

ARCHITECTURE | DESIGN

MACERICH®

Kimley»Horn

Keller Mitchell & Co.  
Landscape Architecture



THE VILLAGE AT CORTE MADERA  
CORTE MADERA, CA 12/16/16

RECEIVED

OCT 04 2017

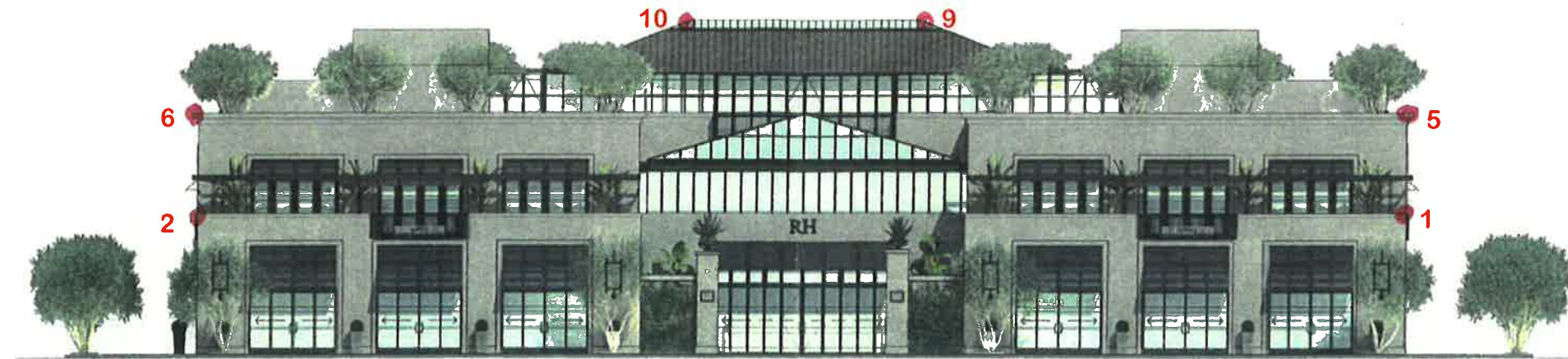
TOWN OF CORTE MADERA

## PRELIMINARY SITE PLAN - BUILDING PAD C3

SCALE: 1" = 20'

MBH





WEST ELEVATION

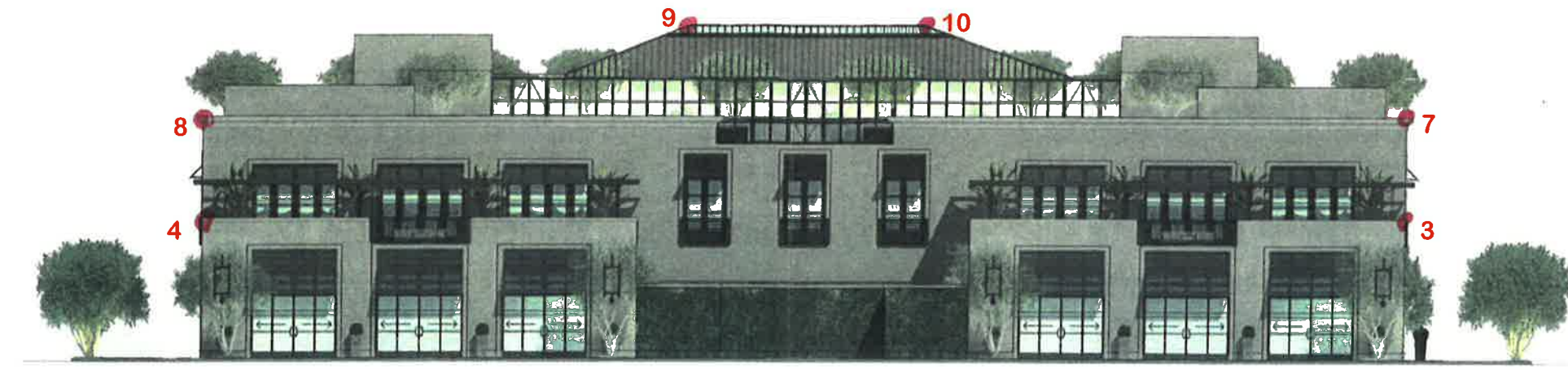


NORTH ELEVATION

THE VILLAGE AT CORTE MADERA  
CORTE MADERA, CA 12/16/16

COLORED EXTERIOR ELEVATIONS **A4**





EAST ELEVATION



SOUTH ELEVATION

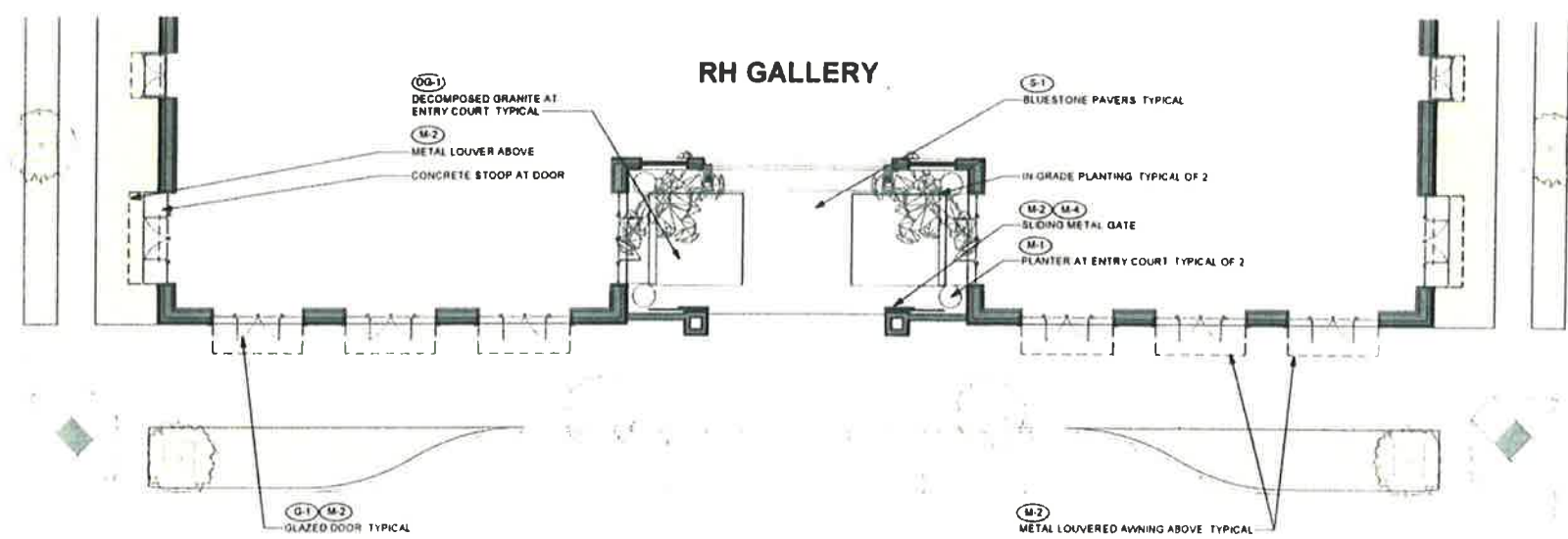
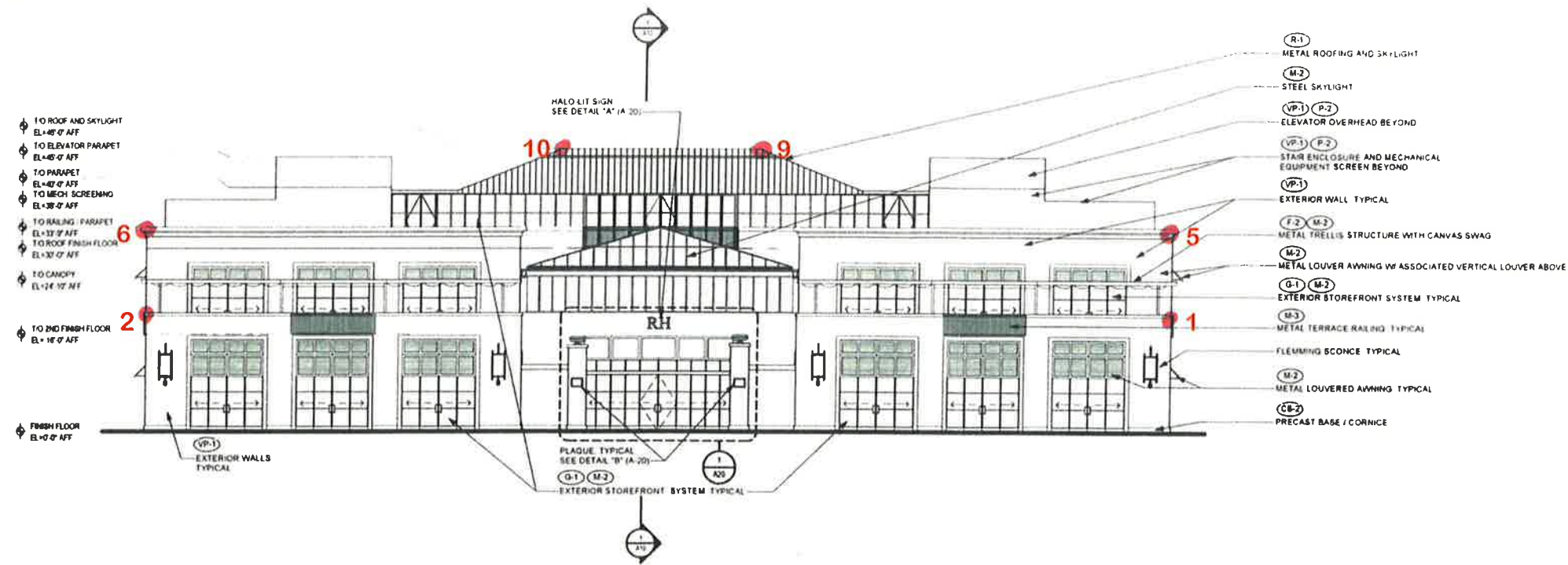
THE VILLAGE AT CORTE MADERA  
CORTE MADERA, CA 12/16/16

COLORED EXTERIOR ELEVATIONS **A5**





NOTE: FINISH FLOOR ELEVATION AND FINISHED GRADE AT THE BUILDING PERIMETER ARE THE SAME ELEVATION (4 PER CIVIL DRAWINGS); ALL VERTICAL DIMENSIONS SHOWN ARE MEASURED FROM THE FINISHED FLOOR / FINISHED GRADE ELEVATION



- (R-1) METAL ROOFING AND SKYLIGHT
- (M-2) STEEL SKYLIGHT
- (VP-1) (P-2) ELEVATOR OVERHEAD BEYOND
- (VP-1) (P-2) STAIR ENCLOSURE AND MECHANICAL EQUIPMENT SCREEN BEYOND
- (VP-1) EXTERIOR WALL TYPICAL
- (F-2) (M-2) METAL TRELLIS STRUCTURE WITH CANVAS SWAG
- (M-2) METAL LOUVER AWNING W/ ASSOCIATED VERTICAL LOUVER ABOVE
- (G-1) (M-2) EXTERIOR STOREFRONT SYSTEM TYPICAL
- (M-3) METAL TERRACE RAILING TYPICAL
- FLEEMING SCENCE TYPICAL
- (M-2) METAL LOUVERED AWNING TYPICAL
- (CB-2) PRECAST BASE / CORNICE

- RH MATERIALS KEY NOTES**
- (DG-1) DECOMPOSED GRANITE
  - (CB-2) PRE-CAST BUILDING BASE
  - (F-2) CANVAS SWAG MATERIAL - "CHARCOAL GRAY"
  - (G-1) GLASS TYP
  - (M-1) PLANTER BOX MATERIAL - "ZINC"
  - (M-2) PAINTED METAL STRUCTURE - "BLACK BEAUTY PAINT"
  - (M-3) PAINTED METAL RAILING - "BLACK BEAUTY PAINT"
  - (M-4) GATE KNOCKER
  - (P-2) EXTERIOR COPING PAINT
  - (R-1) METAL ROOF - "ZINC GREY"
  - (S-1) BLUE STONE PAVERS
  - (VP-1) PLASTER
  - (GL-1) GLASS

**RH**  
ARCHITECTURE | DESIGN

**MACERICH**

**Kimley»Horn**

Keller Mitchell & Co.  
Landscape Architecture

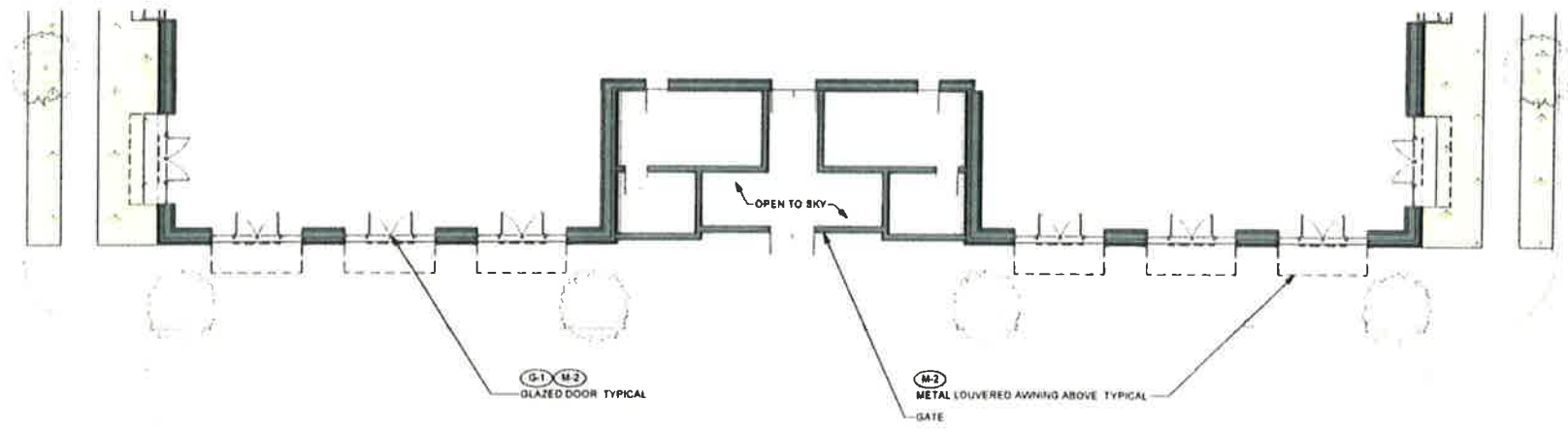
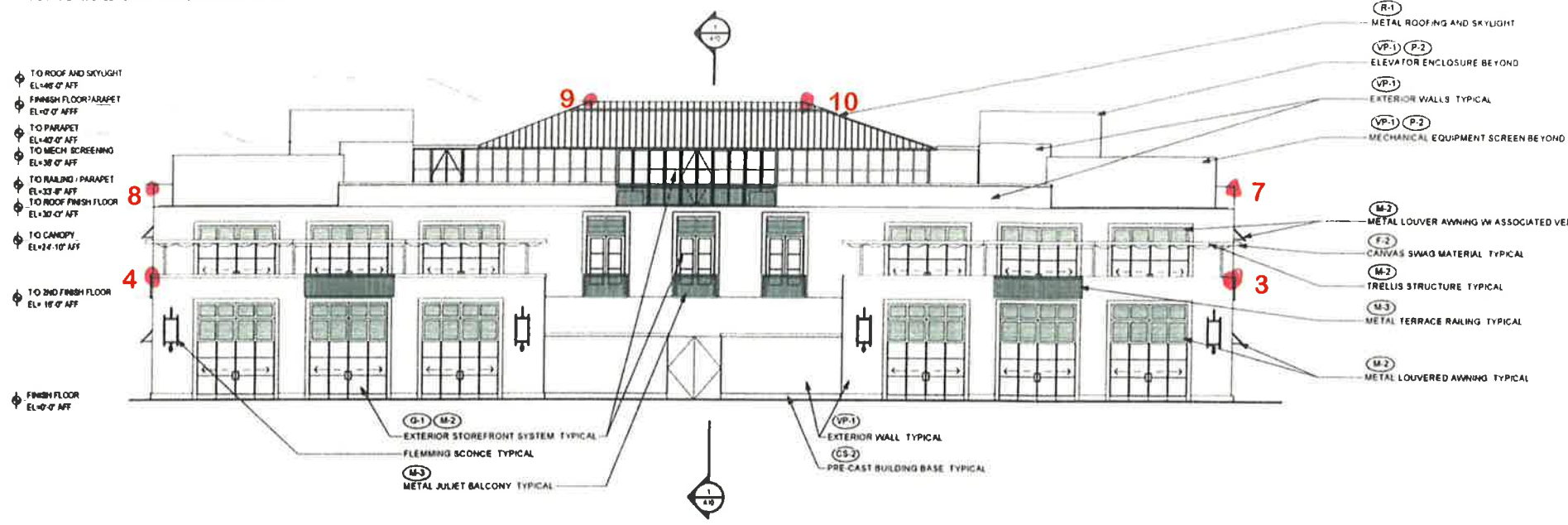
THE VILLAGE AT CORTE MADERA  
CORTE MADERA, CA 12/16/16

WEST ELEVATION / SIDEWALK PLAN **A6**

SCALE: 3/32" = 1'-0"



NOTE: FINISH FLOOR ELEVATION AND FINISHED GRADE AT THE BUILDING PERIMETER ARE THE SAME ELEVATION (7'4" PER CIVIL DRAWINGS). ALL VERTICAL DIMENSIONS SHOWN ARE MEASURED FROM THE FINISHED FLOOR / FINISHED GRADE ELEVATION.



RH MATERIALS KEY NOTES

- (DG-1) DECOMPOSED GRANITE
- (CS-2) PRE-CAST BUILDING BASE
- (F-2) CANVAS SWAG MATERIAL - "CHARCOAL GRAY"
- (G-1) GLASS TYP
- (M-1) PLANTER BOX MATERIAL - "ZINC"
- (M-2) PAINTED METAL STRUCTURE - "BLACK BEAUTY PAINT"
- (M-3) PAINTED METAL RAILING - "BLACK BEAUTY PAINT"
- (M-4) GATE KNOCKER
- (P-2) EXTERIOR COPING PAINT
- (R-1) METAL ROOF - "ZINC GREY"
- (S-1) BLUE STONE PAVERS
- (VP-1) PLASTER
- (GL-1) GLASS

**RH**  
ARCHITECTURE | DESIGN

**MACERICH**

**Kimley»Horn**

Keller Mitchell & Co.  
Landscape Architecture

THE VILLAGE AT CORTE MADERA  
CORTE MADERA, CA 12/16/16

EAST ELEVATION / SIDEWALK PLAN **A8**

SCALE: 3/32" = 1'-0"

