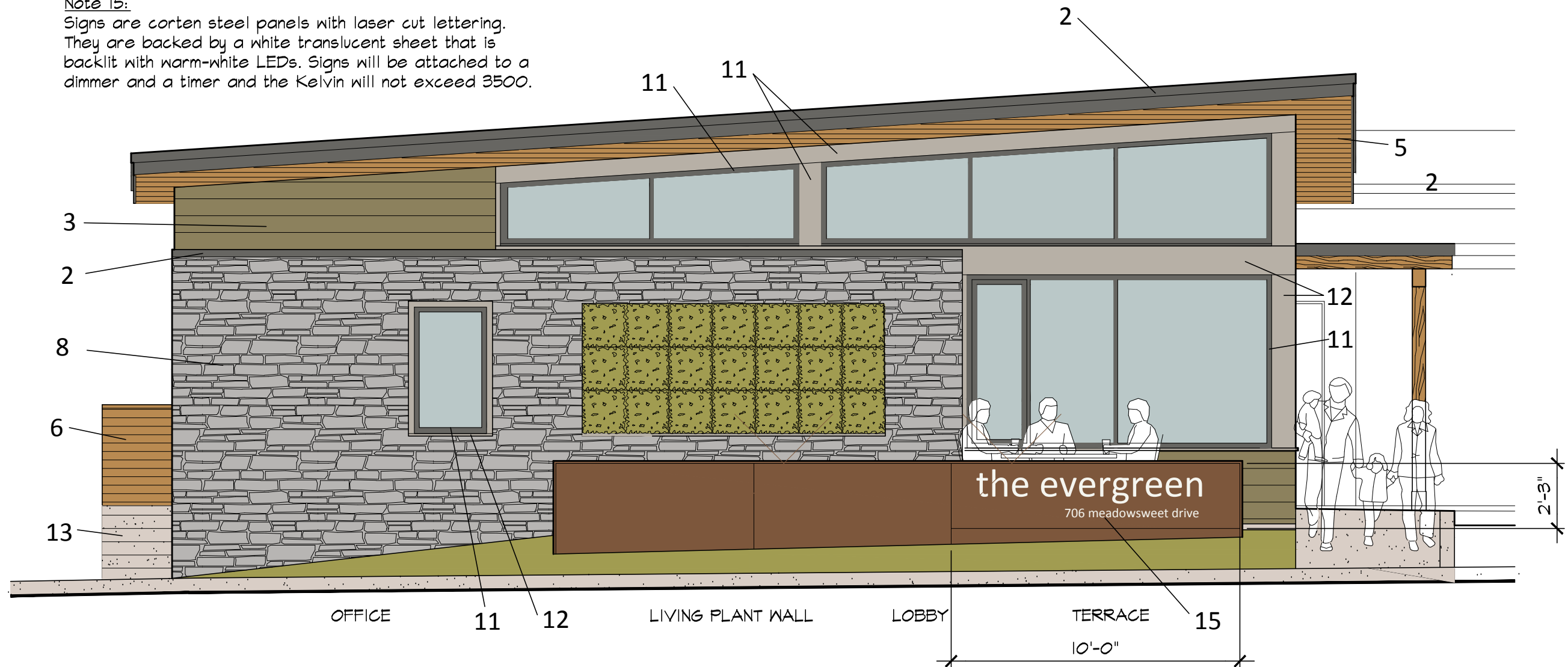


Note 15:
 Signs are corten steel panels with laser cut lettering.
 They are backed by a white translucent sheet that is
 backlit with warm-white LEDs. Signs will be attached to a
 dimmer and a timer and the Kelvin will not exceed 3500.



PARTIAL SOUTH ELEVATION

SCALE: 1/4" = 1'-0"



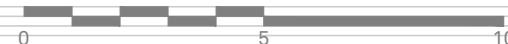
1743 Alcatraz Avenue
 Berkeley, CA 94703
 tel 510 450 9090
 fax 510 450 9091
 www.sp-arc.com

samonsky
 + pometta
 architects, llp

SIGNAGE ELEVATIONS

Planning Approvals

Scale: 1/4" = 1'-0"



The Evergreen

Marin Motels, LLC
 706 Meadowsweet Avenue
 Corte Madera, CA 94925
 Revised 11-08-18